

GHANA 2023 INTEGRATED BUSINESS ESTABLISHMENT SURVEY I (IBES I)

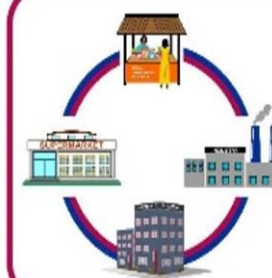
Scope of IBES I



August-September 2023



GHANA
STATISTICAL SERVICE



GHANA 2023 INTEGRATED
BUSINESS ESTABLISHMENT
SURVEY (IBES)

*Data for Prudent
Business Decisions*

Outline of Presentation

- Introduction
- Purpose and Learning Outcomes
- Concepts and Definitions
- Scope of IBES Establishments
- Revision

Introduction

- A census of economic activities has been conducted in 1987, 2003, and 2013.
- The 1987 and 2003 Industrial census focused exclusively on the industrial sector of the economy.
- The 2013 IBES covered businesses in all sectors. However, it excluded:
 - business activities not in fixed locations
 - businesses operating within residential structures lacking exclusive entry and exit access; and
 - businesses operating in open spaces
- The 2023 IBES will include what was not covered in 2013 IBES.

Purpose and Learning Outcomes

- The purpose of this presentation is to equip trainees with adequate knowledge and understanding of the scope of 2023 IBES.
- By the end of this presentation the participants should be able to:
 1. explain the focus of 2023 IBES
 2. distinguish between the various categories of businesses.

Concepts and Definitions

Structure: This refers to a separate and independent building with an enclosure (2021 PHC). It could be:

- fully completed or uncompleted;
 - residential or non-residential;
 - occupied or unoccupied; and
 - movable or fixed.
-
- **Non-2021 PHC Structure or IBES structure:** These are independent structures without enclosures (e.g., sheds) but used for business activity

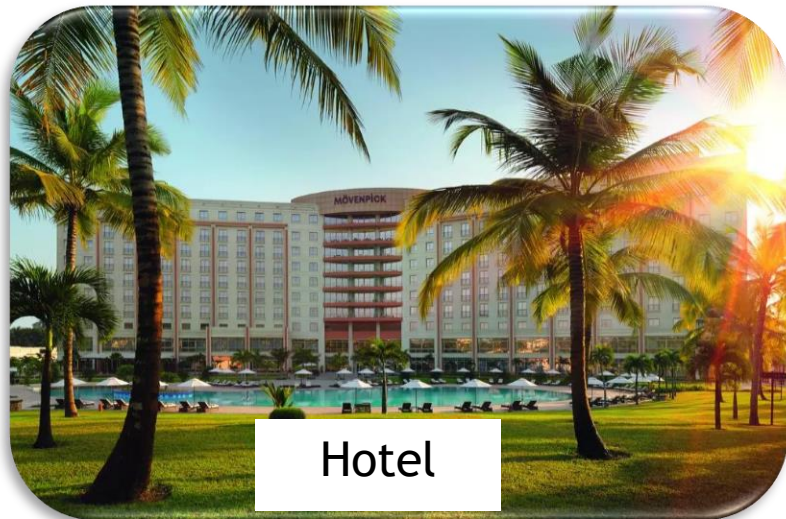
Scope of IBES Establishments (1/8)

1. Business operating from 2021 PHC defined Structure:

These are separate and independent building or an enclosure either completed or uncompleted.

- These structures are either used for residential or non-residential activities.
- They are usually found in structures that are in fixed locations and can be traced at any time when the need arises.

Business operating from 2021 PHC defined Structure



Hotel



University



Clinic



School

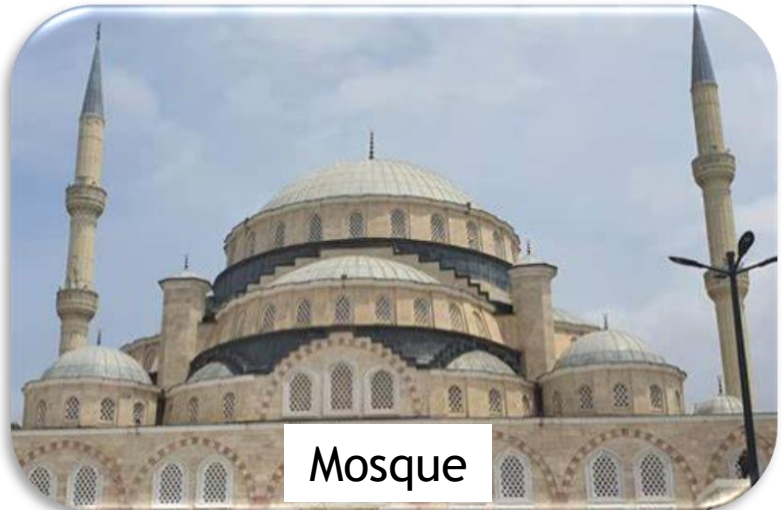
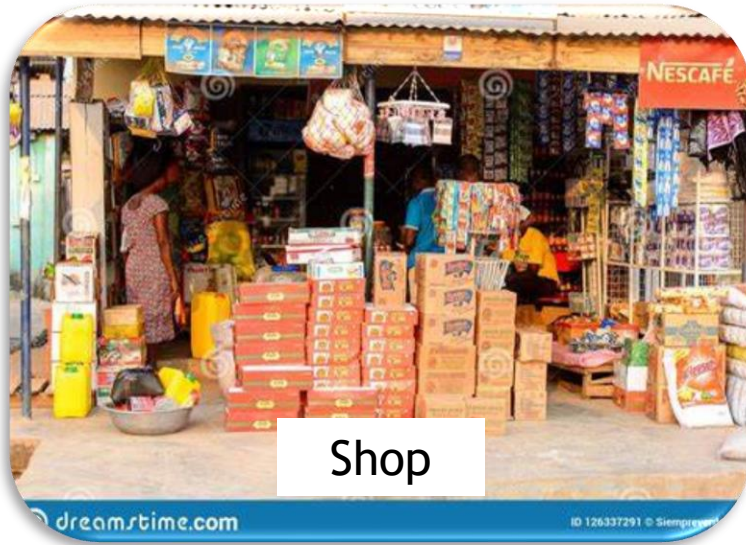


Block Factory



Poultry Farm

Business operating from 2021 PHC defined Structure (Cont'd)



Business operating from 2021 PHC defined Structure (Cont'd)



Scope of IBES Establishments (2/8)

2. Businesses operating from a Non-2021 PHC Structure:

These are independent structures without enclosures (e.g., sheds) but are used for business activity



Businesses operating from a Non-2021 PHC Structure (Cont'd)



Scope of IBES Establishments (3/8)

3. Businesses operating in an Open Space but Fixed Location:

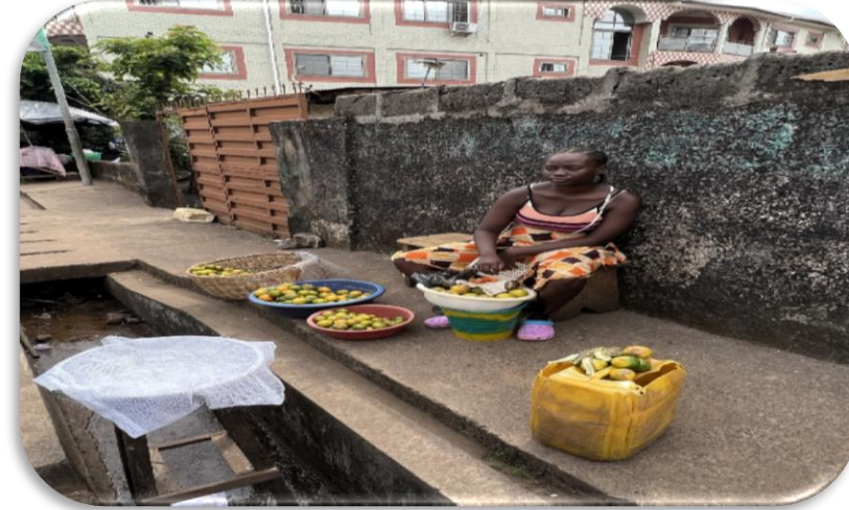
These are businesses that operate in fixed locations but not in structures and are exposed directly to weather conditions

a. Open space independent of a market

- These are business activities undertaken in the open space outside or independent of the designated market area.
- These are found in residential neighborhood



Businesses operating in an Open Space but Fixed Location



Scope of IBES Establishments (4/8)

3. Businesses operating in an Open Space but Fixed Location

b. Open space in and around the market

- These are business activities undertaken not in stalls or under sheds but around designated market areas.



Scope of IBES Establishments (5/8)

4. Businesses operating in structures not intended for its original purpose:

These are business activity operating temporarily in the same location, but in structures

- Example: churches in school

Church service in school building



Business operating in structures not intended for its original purpose (Cont'd)

- Businesses running shift with other businesses in the same structure.
- Example: night market



Night market at Osu, Accra

- Businesses operating in locations temporarily allocated for such activities.
- Example: Sunday market

Sunday market at Kotokraba



Scope of IBES Establishments (6/8)

5. Virtual Businesses:

These are business activities whose transactions are virtual (electronic).

- It includes buying and selling online or providing an online service.



Scope of IBES Establishments (7/8)

6. Mobile Businesses:

These are businesses that operate not in a fixed location and not in structure. but they operate while in motion with the aid of a motorized and non-motorized machines or an animal

a. Vehicle/Animal-assisted mobile businesses

- For example, selling ice cream on bicycle, selling bread in a van, donkey, selling coconut in a wheelbarrow, etc.

Mobile Businesses



Scope of IBES Establishments (8/8)

6. Mobile Businesses

b. Hawking

- Business activities undertaken not in structures or fixed locations but are mobile.
- These include vendors who travel or move on foot from place to place, selling goods or providing services.
- For example, shoe-shine boys, ice-water sellers, etc.



Revision

1. Explain why IBES 2023 is different from the previous IBES
2. Mention all the different types of business activities that will be visited in the IBES
3. Distinguish between businesses that operate in open Space independent of a Market and that of Open Space around a Market
4. Distinguish between businesses that operate in a Temporal Fixed Location and that of fixed location

THANK YOU

Please Any Question...?

